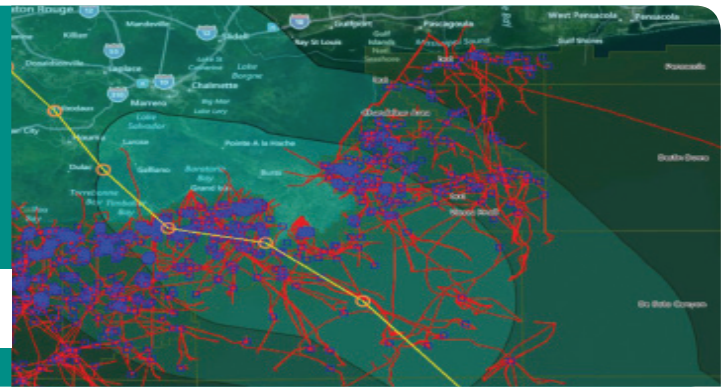
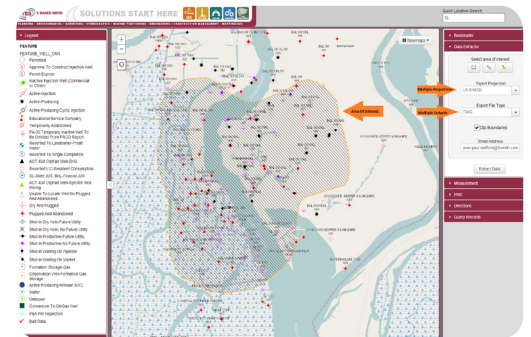
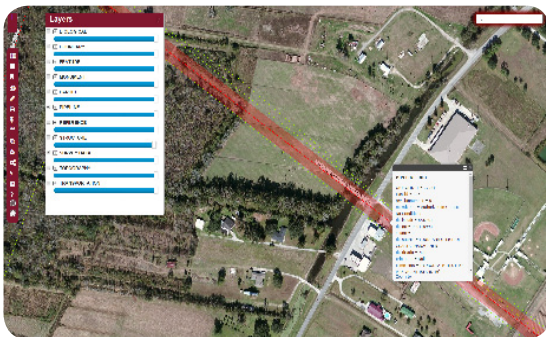


GIS/ MAPPING

A CENTURY OF SOLUTIONS



T. Baker Smith, LLC (TBS) introduces its Client History Information Portal Solution (C.H.I.P.S.), a complete data management tool designed to assist clients in the administration of assets. Hosted by TBS, the GIS-based solution consists of the implementation, configuration, and maintenance of updated, accurate records, which is accessible to authorized users via a web-based portal. By managing a project's data in one place, this dynamic resource can manage, track, and store data to allow each project phase to be run more efficiently.



GIS/MAPPING SOLUTIONS:

Custom Solutions

- Data Conversions
- Data Integration
- FME Workspace and Server
- Software Development

Visual Reference of Data/Records

- As-built Survey Data and Drawings
- Decommissioning Documentation
- Environmental Permits
- Initial Construction Drawings
- Integrity/Assessment Management

- Inspection Records
- Landowner Information
- Maintenance Records
- Maps and Plats
- Right-of-way Agreements

Planning | Environmental | Surveying | Engineering | GIS/Mapping

A CENTURY OF SOLUTIONS • 866.357.1050 • tbsmith.com • A CENTURY OF SOLUTIONS



T. BAKER SMITH, LLC
A CENTURY OF SOLUTIONS

CONTACT US



Corporate Headquarters:

Houma, Louisiana
 Office: 985.868.1050
 Fax: 985.868.5843

www.tbsmith.com

Lafayette, Louisiana	337.735.2800
Baton Rouge, Louisiana	225.744.2100
Thibodaux, Louisiana	985.446.7970
Covington, Louisiana	985.590.5742
Metairie, Louisiana	504.323.3460
Houston, Texas	281.240.0113
San Antonio, Texas	210.892.4700
Toll Free	1.866.357.1050

MARKET SECTORS:

- Public Works
- Oil & Gas Exploration and Production
- Pipeline
- Industrial Infrastructure
- Land Development

PRACTICE AREAS:

- Planning
- Environmental
- Surveying
- Engineering
- Program/Project/Construction Management
- Mapping/GIS
- 3D Modeling

BENCH STRENGTH: 250+ professionals and support staff

- | | |
|--------------------------------------|--------------------------------|
| Planners | Offshore Surveyors |
| Civil Engineers | Project Managers |
| Structural Engineers | Project Technicians |
| Coastal Engineers | Project Controllers/Assistants |
| Environmental Engineers | CADD Technicians |
| Hydrologic Modelers | 3D Modelers |
| Environmental Compliance Specialists | GIS Technicians |
| Oyster Biologists | Application Developers |
| Biologist/Wetland Delineators | HSE Professional |
| Professional Land Surveyors | Administrative Support |
| Near/On Shore Surveyors | |

IN-HOUSE RESOURCES:

- 30 Standard 3 Man Land/Near Shore Survey Crews
- 20 Marine Survey Vessels and Barges
- Offshore Geophysical Survey Vessel
- 4 Near Shore/River Hydrographic Survey Vessels
- 7 Airboats and 2 Marsh Buggies
- 20 All-Terrain Vehicles
- 20 GPS Total Stations
- Laser Scanner, Multibeam, Digital Sonar
- 37 Gradiometers/Magnetometers